

Intelligence.

Your greatest asset.



Private equity information - It's as easy as 1, 2, 3.

1. Deals Intelligence
2. Fundraising & Investor Relations
3. Portfolio Company Returns Data

www.privateequityinsight.com

2. Fundraising & Investor Relations

Private Equity Insight tracks the changing strategies and preferences of over 1,700 LPs. It identifies those most likely to allocate to your type of fund, provides data on when their next allocation is expected and supplies the details of the correct person to contact.

Use our limited partner data to:

- identify specialist funders
- view asset allocation, previous investments made, fund investment plans and preferred strategies
- see which LPs have recently allocated capital to funds in your space
- generate independent data, charts & graphs for PPMs and marketing literature
- identify, track and build relationships with key decision makers
- ensure you meet all key local LPs during road shows
- track who else your investors are investing with



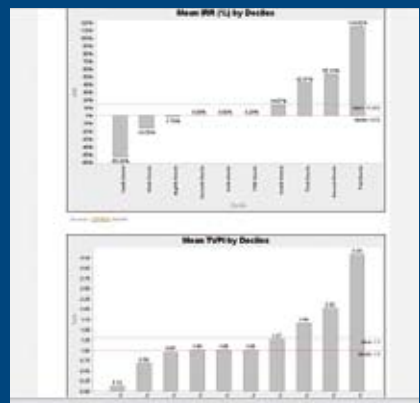
3. Portfolio Company Returns Data

Private Equity Insight's Returns Analyser module is unique in the market and gives you aggregated portfolio company returns data for deals sourced globally. This means that, for the first time EVER, you can accurately benchmark returns for your target market by sector, region (Europe, USA & ROW) and country. This unique tool also allows you to:

- identify the best performing sectors
- compare performance of your investments
- see money multiple and IRRs
- measure returns based on deals NOT on aggregated funds

Nowhere else will you be able to measure accurate returns on a deal basis and in such depth. For a full explanation of the Returns Analyser, read our FAQ at:

www.privateequityinsight.com/analyser_faq.jsp



privateequityinsight.com/freetrial

Consult Private Equity Insight – Our bespoke data service

Consult Private Equity Insight is our new bespoke data service for those who have specific ongoing data needs without necessarily requiring access to the whole of Private Equity Insight.

For as little as £500/€600*, you can have data to order that is tailored to your needs. Simply tell us your requirements and we'll do the rest.

Contact Sarah Jackson now at sarah.jackson@incisivemedia.com or on +44 (0)20 7484 9750 for further information on how **Consult Private Equity Insight** can help you.

* Price will vary on a case by case basis dependent on client requirements.

Trial Private Equity Insight for FREE

A free trial to **Private Equity Insight** commits you to nothing and allows you to see for yourself how much you'll benefit from a subscription to this market leading information product.

Sign up now by:

1. Visiting www.privateequityinsight.com/freetrial
2. Call Rachel Addo on +44 (0)20 7968 4506
3. Email Rachel at rachel.addo@incisivemedia.com

Visit www.privateequityinsight.com for more information.



www.privateequityinsight.com